

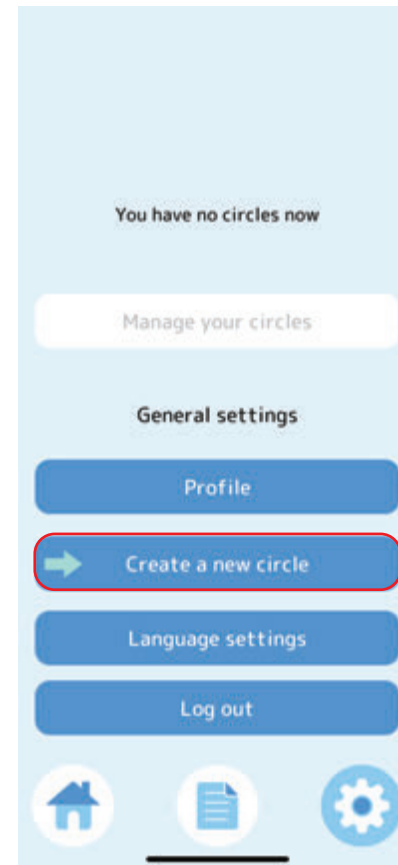


OQTA Basic
Connection Setup

OQTA Basic Connection Setup 1



Go to the settings menu from the icon in the bottom right.

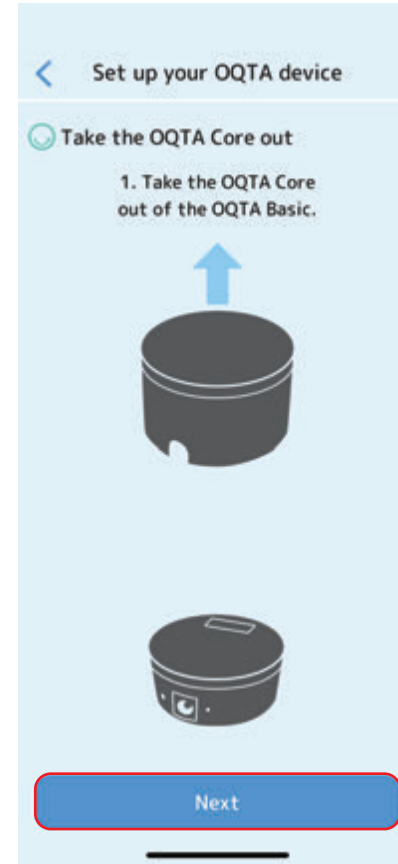


Tap “Create a new circle.”

OQTA Basic Connection Setup 2



Tap "OQTA Basic."

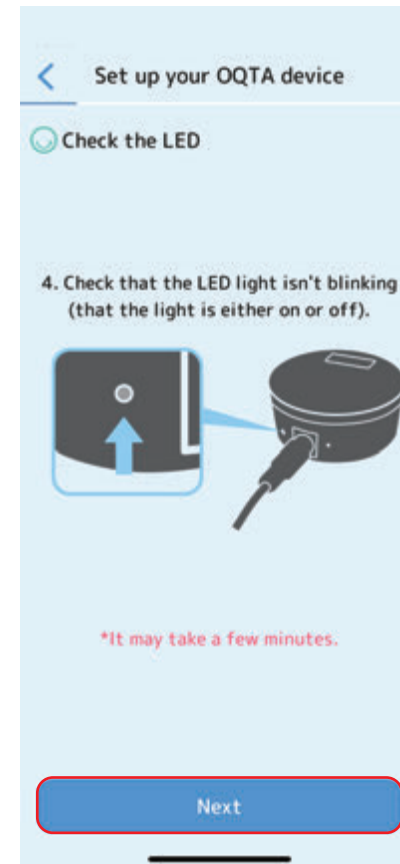


Take OQTA Core out of your OQTA Basic. Then tap "Next."

OQTA Basic Connection Setup 3

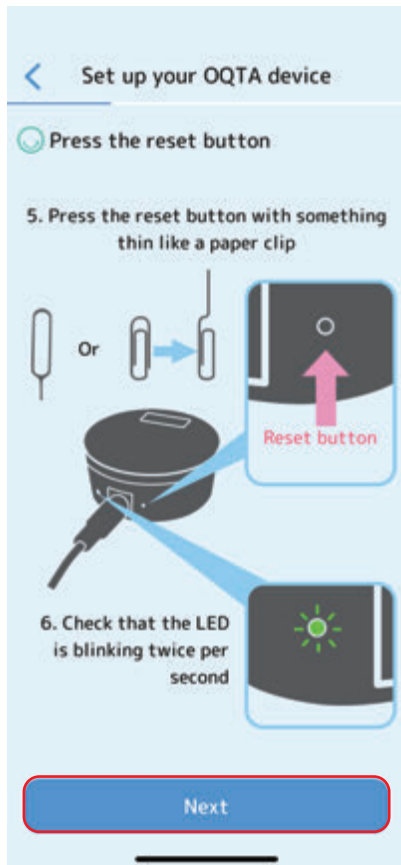


Connect the adaptor to OQTA Core, then insert the adaptor into an outlet.
Tap "Next."

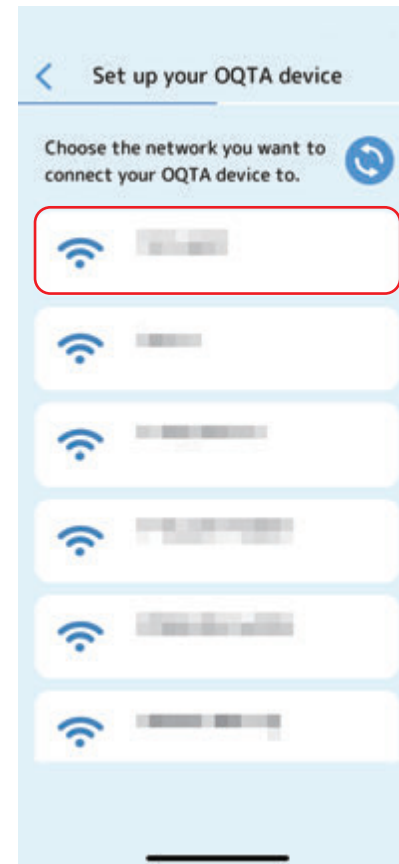


Make sure the LED light on the back of OQTA Core is either on or off (not flashing).
Tap "Next."

OQTA Basic Connection Setup 4



Press the reset button on the back of your OQTA Basic with something thin such as a paper clip. The LED light should flash twice. If it does, tap “Next.”

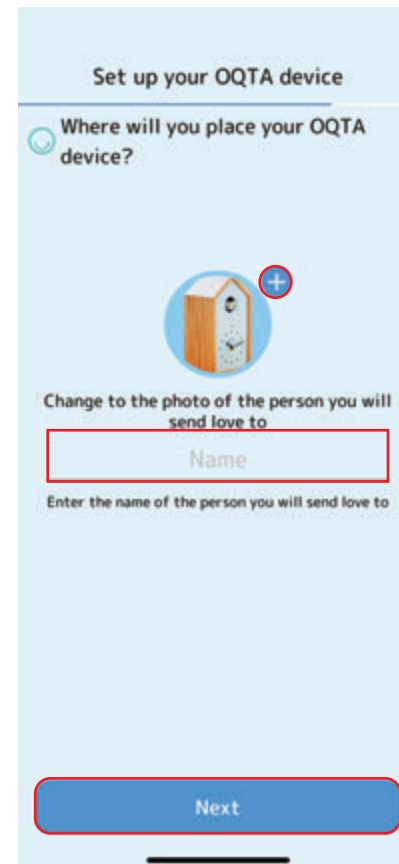


Select a Wi-Fi network you want to connect your OQTA Basic to.

OQTA Basic Connection Setup 5

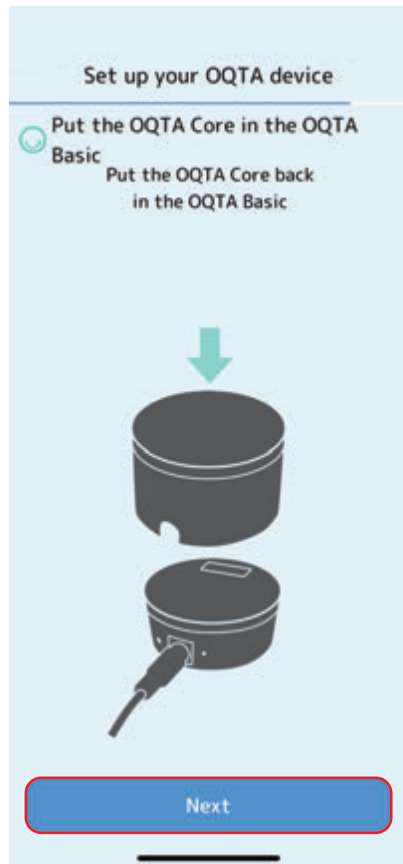


Enter the password of the Wi-Fi network, then tap “Next.”



Enter the name of the person who will be given your OQTA Basic. You can also change the profile picture here. *You can change it at any time. Tap “Next.”

OQTA Basic Connection Setup 6

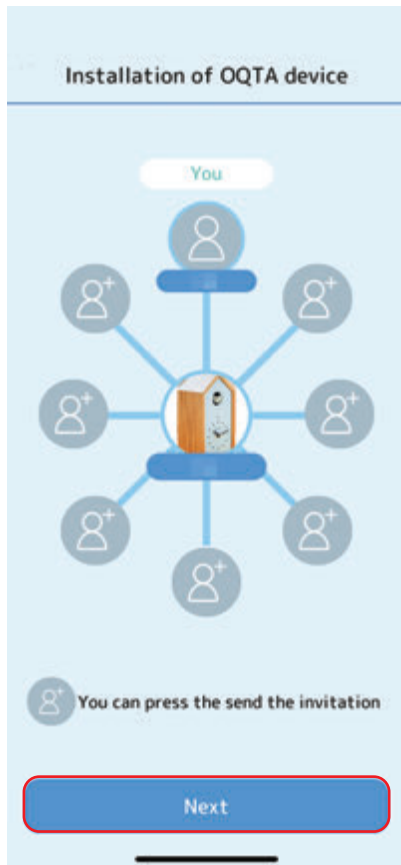


Please put the separated device back. Then tap "Next".

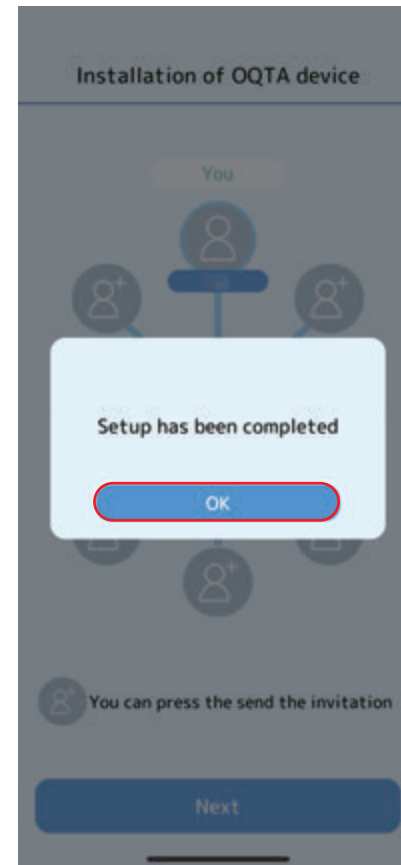


Tap the round icon in the center. Within up to 30 seconds, your OQTA Basic should make sounds and light up as many times as you tap. If it does, tap "Next."

OQTA Basic Connection Setup 7



Invite up to seven more senders to your circle.
*You can invite senders at any time. Tap "Next."



Your OQTA Basic has been successfully set up if you see the message shown left. Tap "Yes" to finish the setup.